

HM Wire International, Inc.

Ph: 330-244-8501 Fax: 330-244-8561

www.litz-wire.com info@litz-wire.com www.hmwire.com

American Spool Configurations



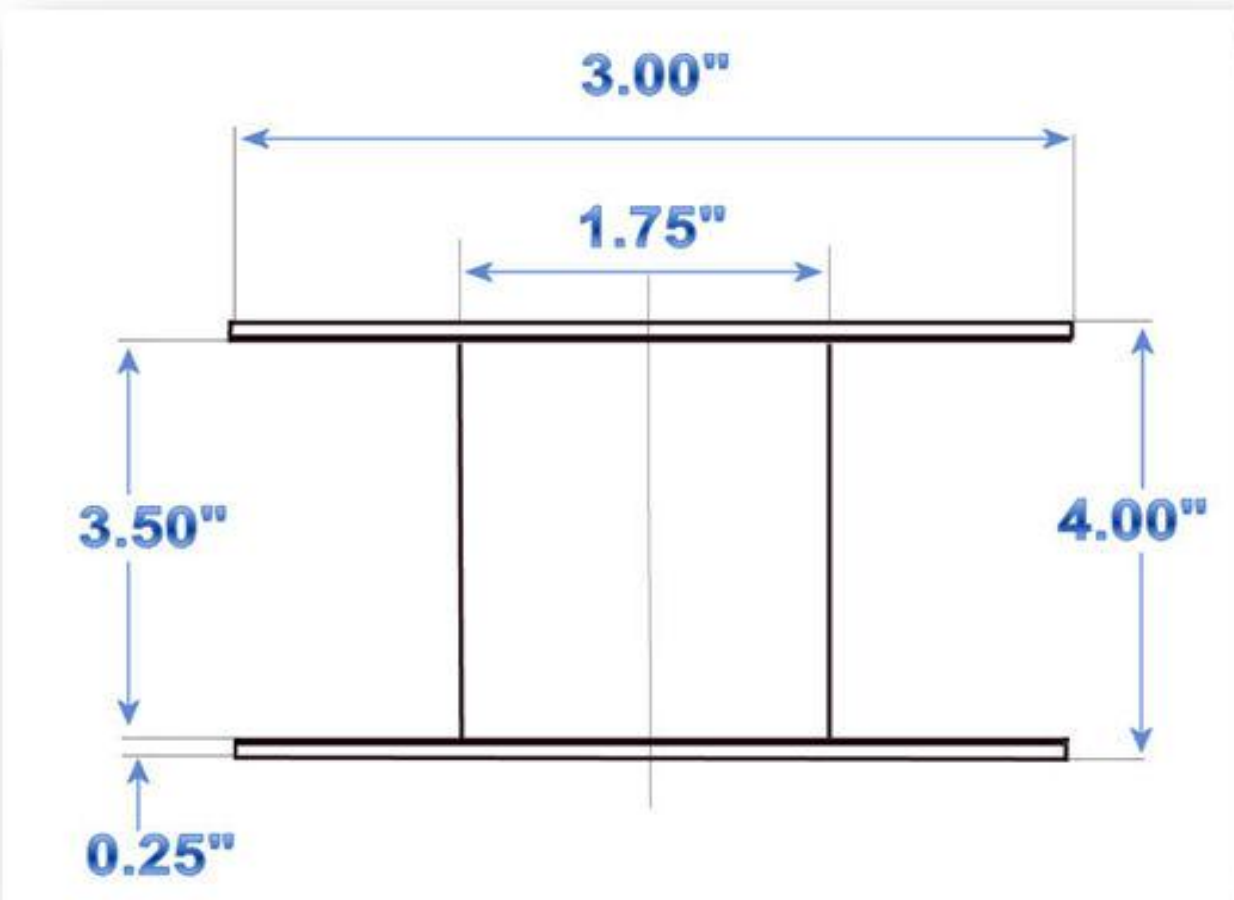
3" X 4" Spool Size

Spool identification:

3' Spool

Nominal Wire Weight:

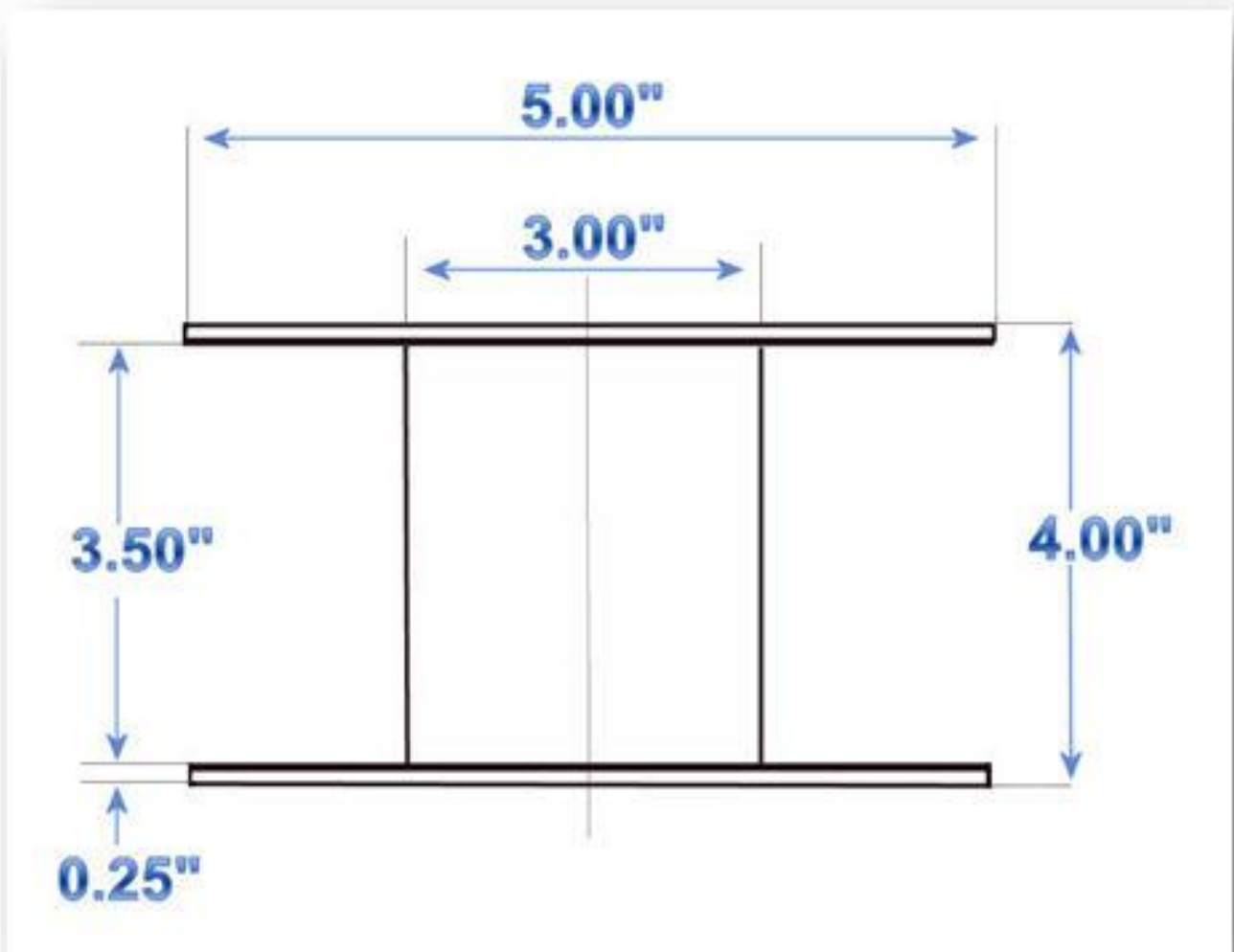
2 Lbs.





5" X 4" Spool Size

Spool identification:
4 7/8" Spool
Nominal Wire Weight:
5 Lbs.





6" X 3½" Spool Size

Spool identification:

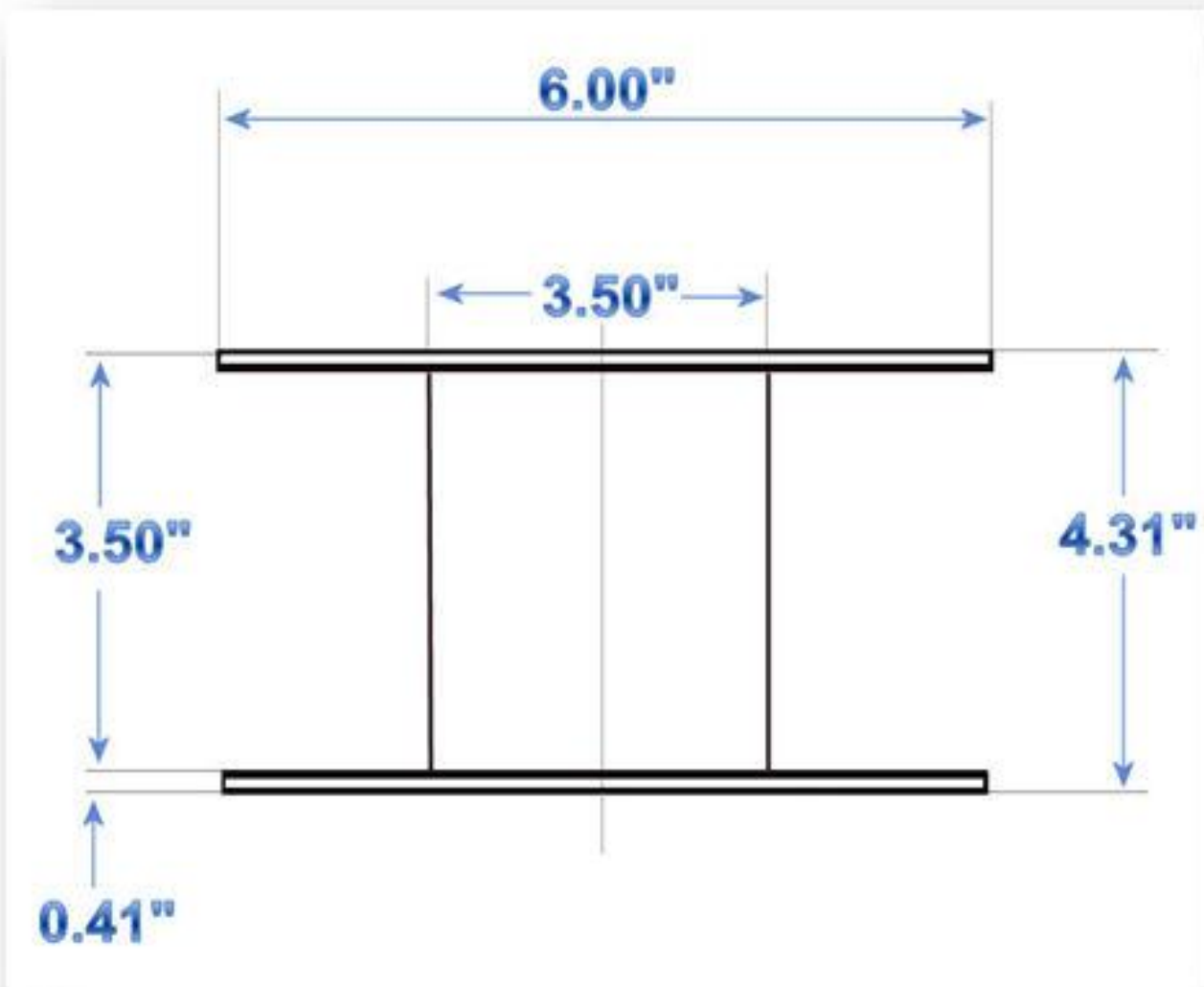
6" Spool

Nominal Wire Weight:

8 Lbs.

Copper Covered Weight:

9 Lbs.





6" X 6" Spool Size

Spool identification:

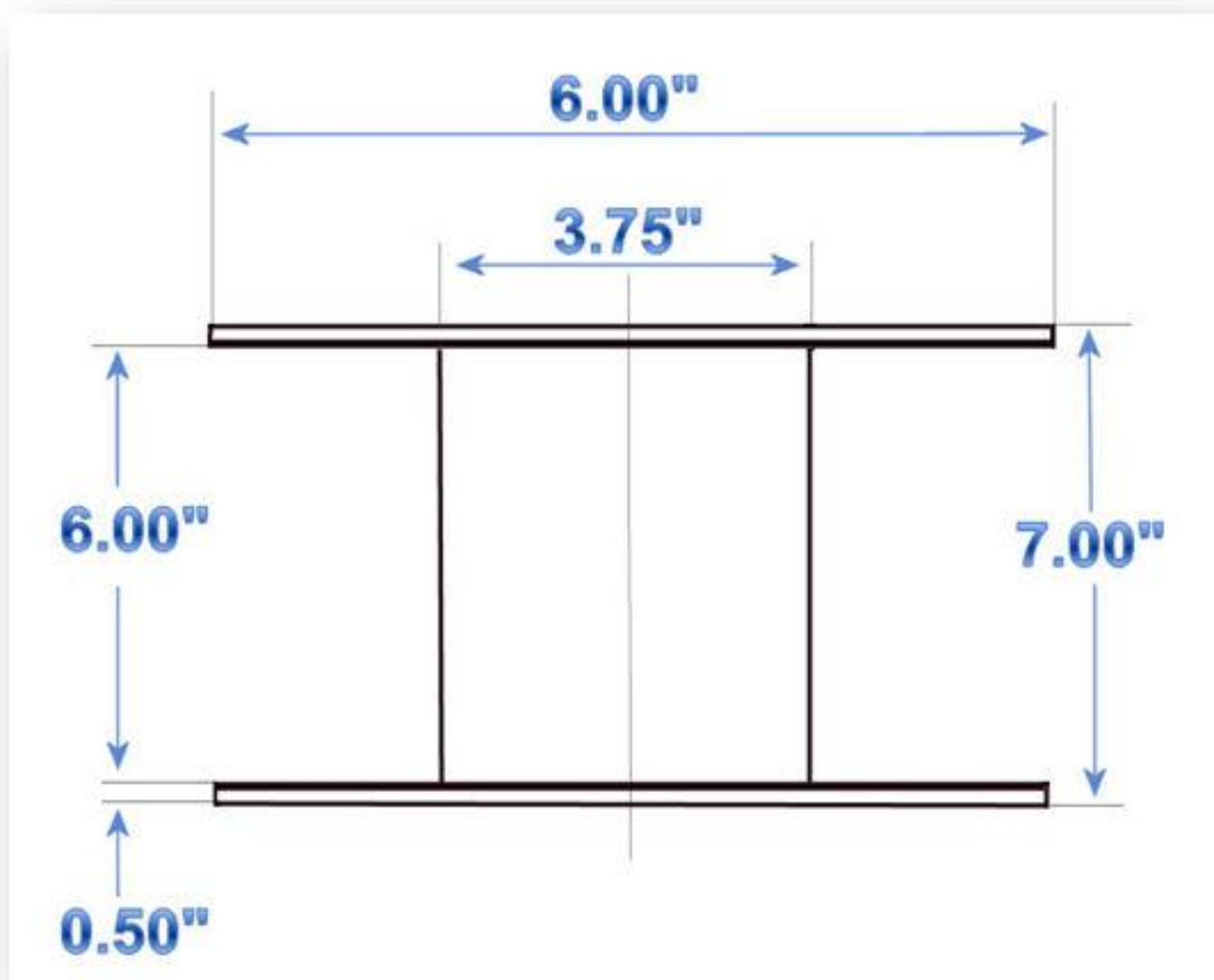
6" x 6" Spool

Nominal Wire Weight:

12 Lbs.

Copper Covered Weight:

16 Lbs.





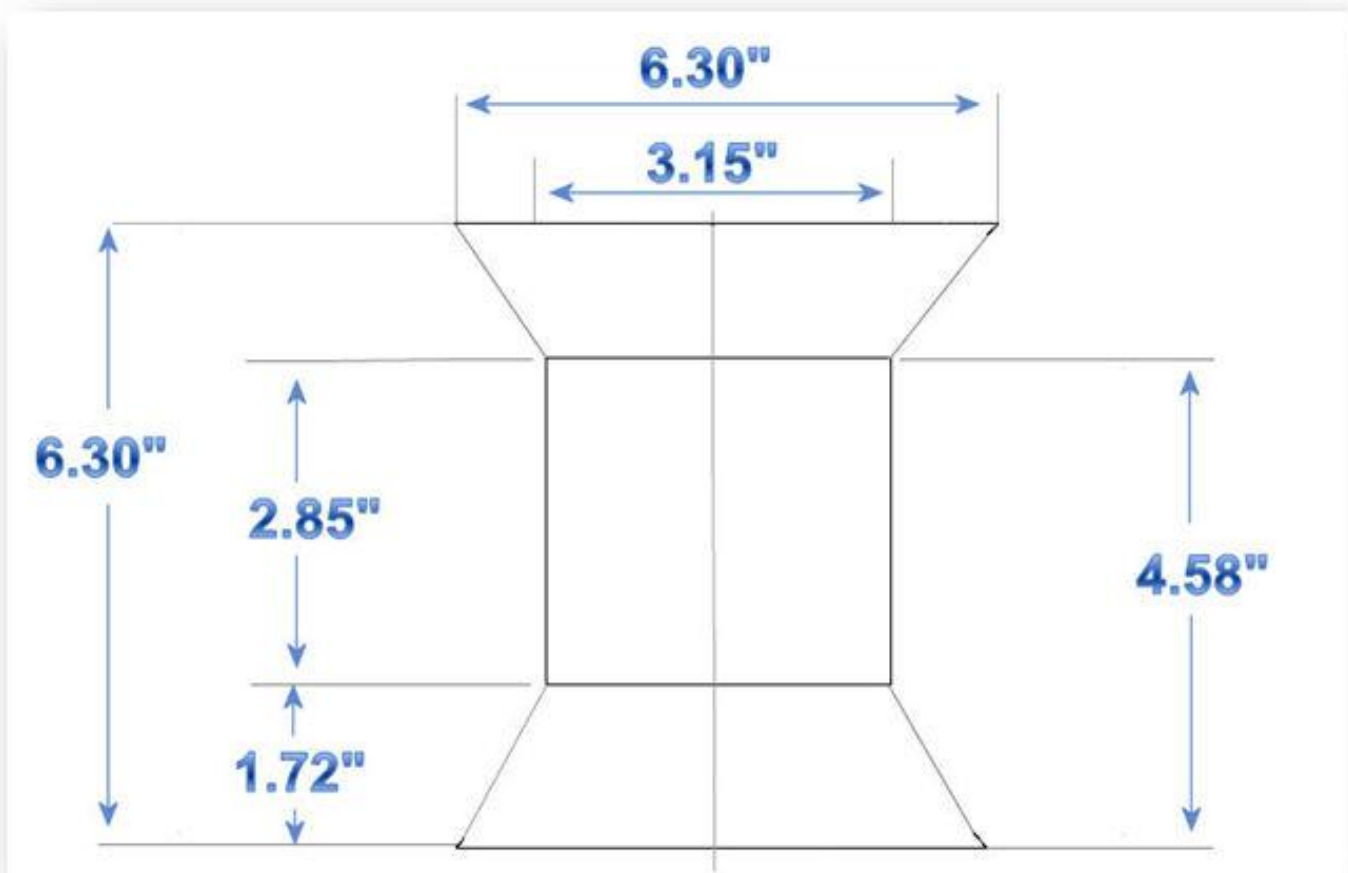
Din 160/45 Spool

Spool identification:

Din 160/45

Nominal Wire Weight:

13 Lbs.





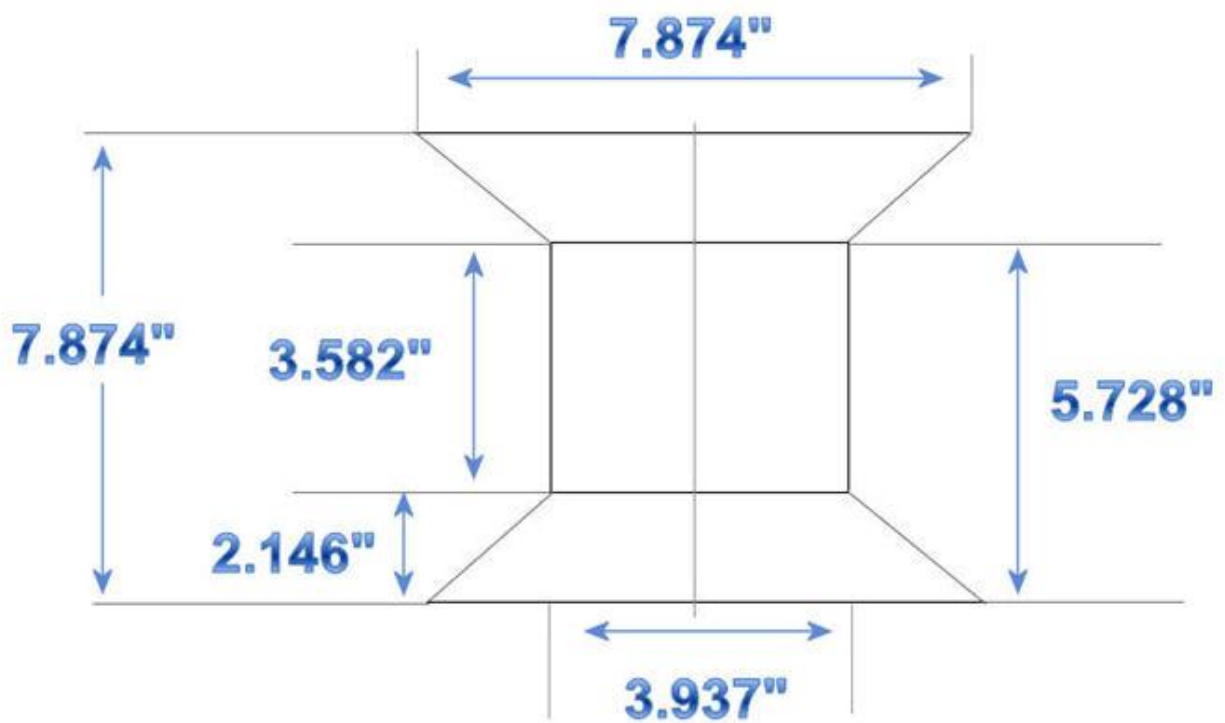
Din 200/45 Spool

Spool identification:

Din 200/45

Nominal Wire Weight:

25 Lbs.





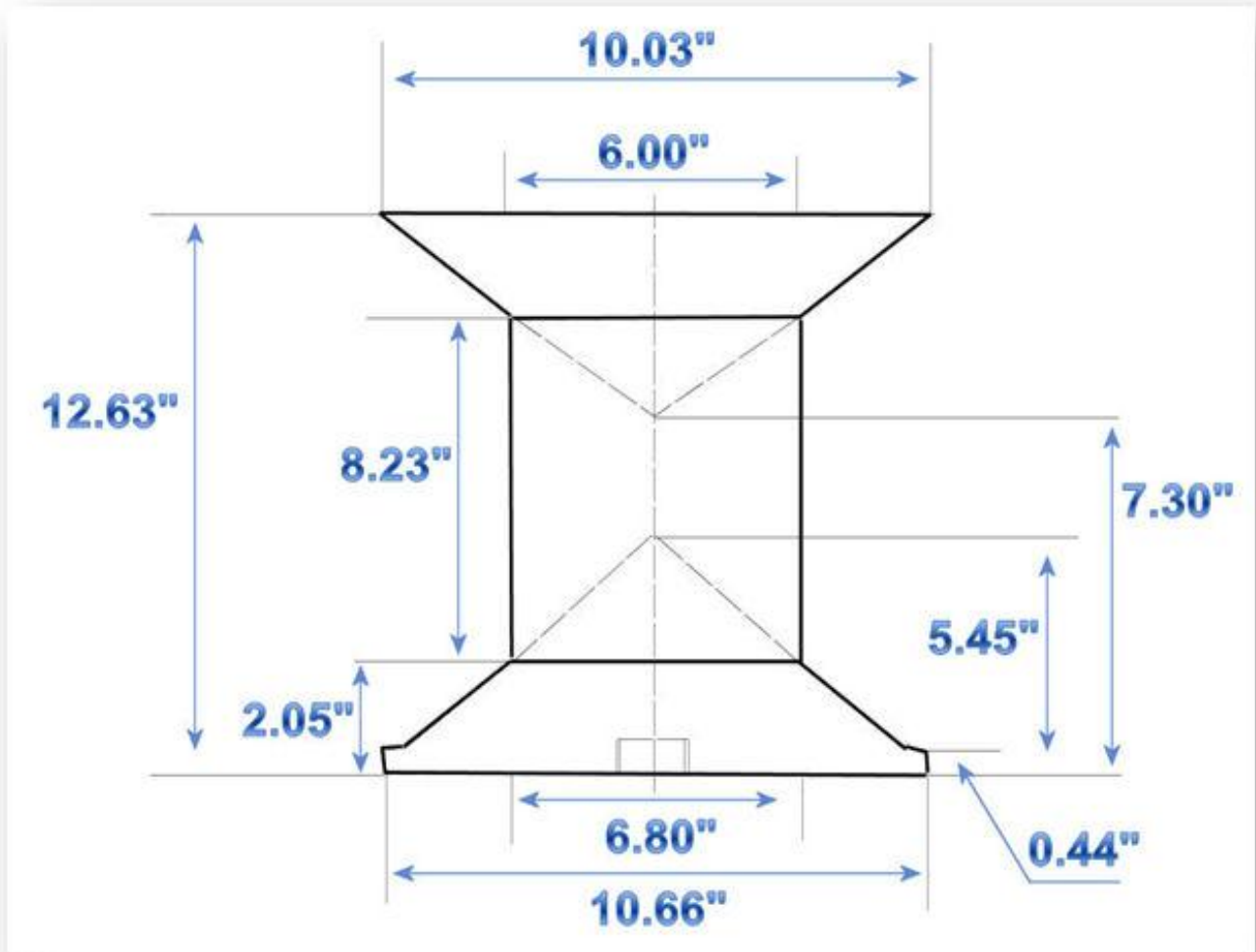
Taper Flange 80

Reel identification:

Taper Flange TF 80

Nominal Wire Weight:

75 Lbs. CU / 25 Lbs.





12" X 7" Reel

Reel identification:

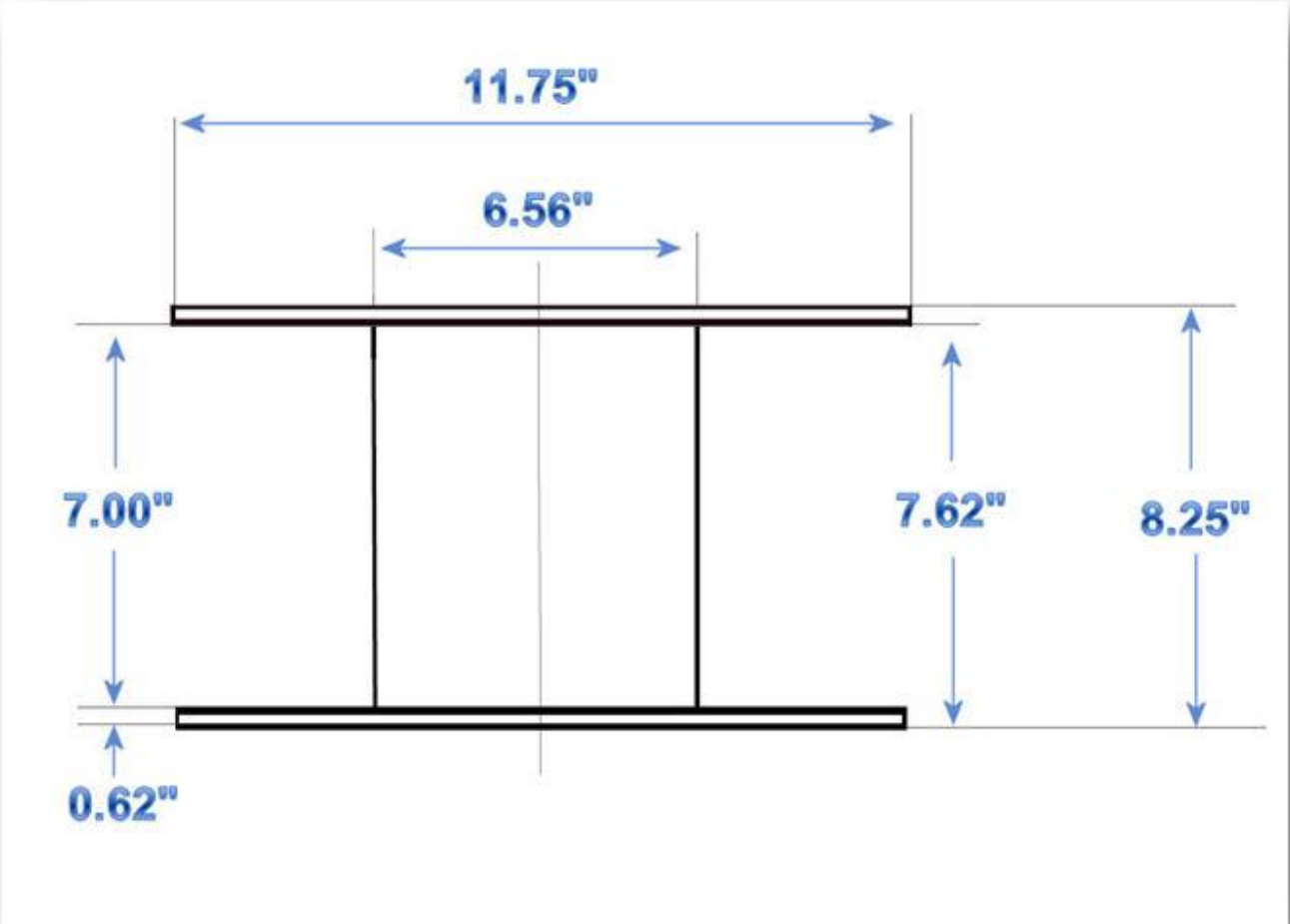
12" X 7" Reel

Nominal Wire Weight:

75 Lbs. CU / 25 Lbs.

Copper Covered Weight:

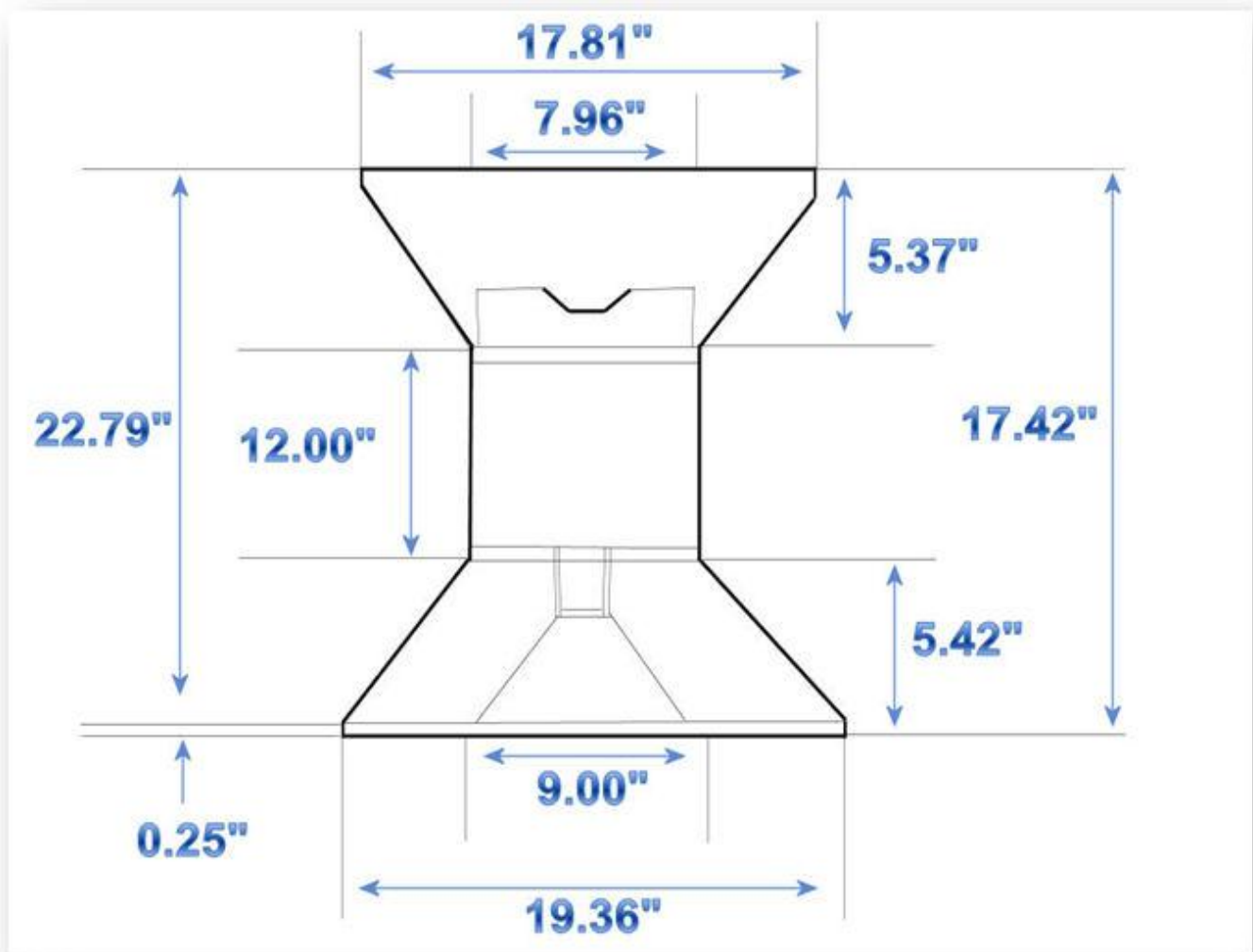
400 Lbs.





Taper Flange 600

Reel Identification:
Taper Flange TF 600
Nominal Wire Weight:
600 Lbs. CU / 180 Lbs.





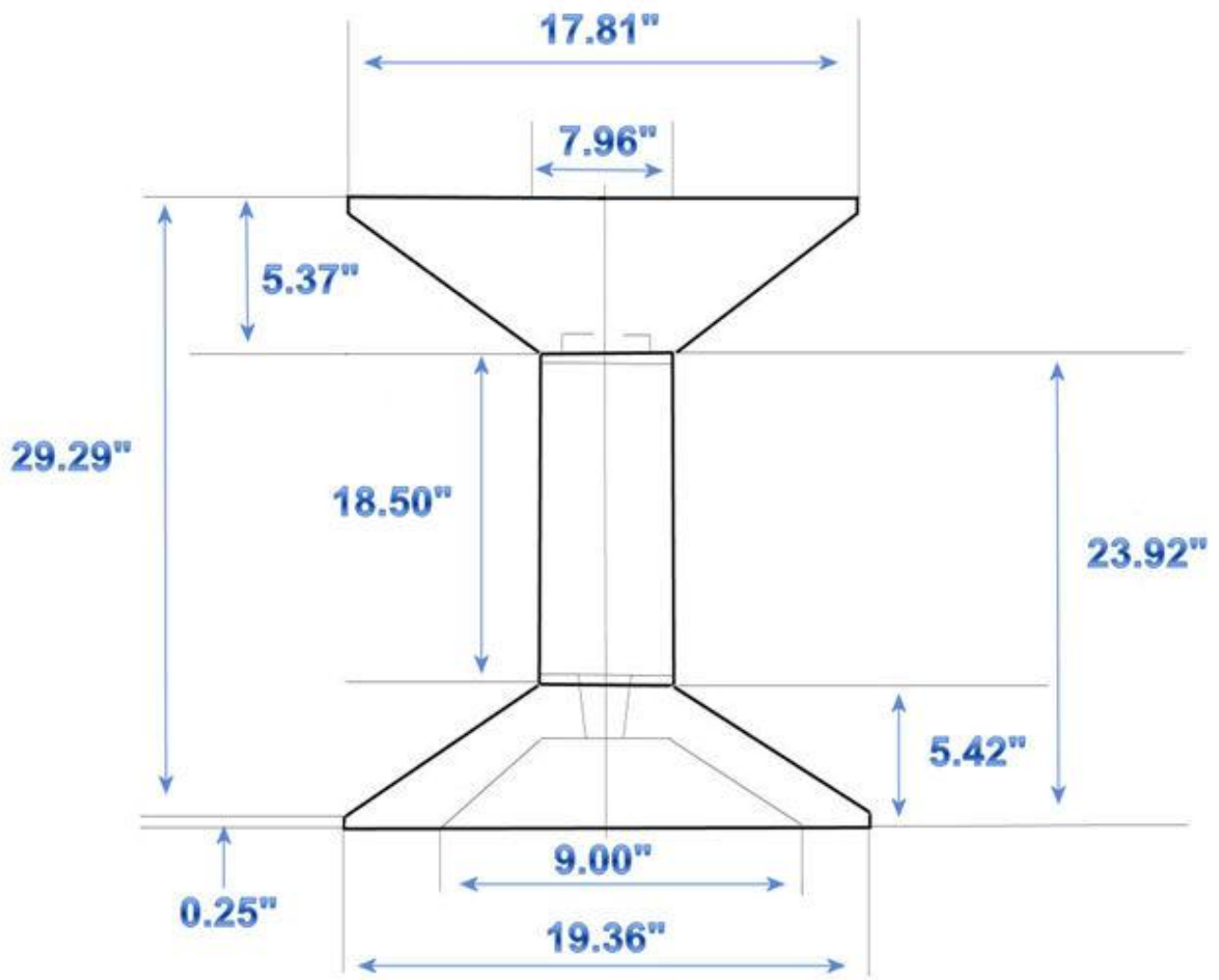
Taper Flange 1000

Reel Identification:

Taper Flange TF 1000

Nominal Weight:

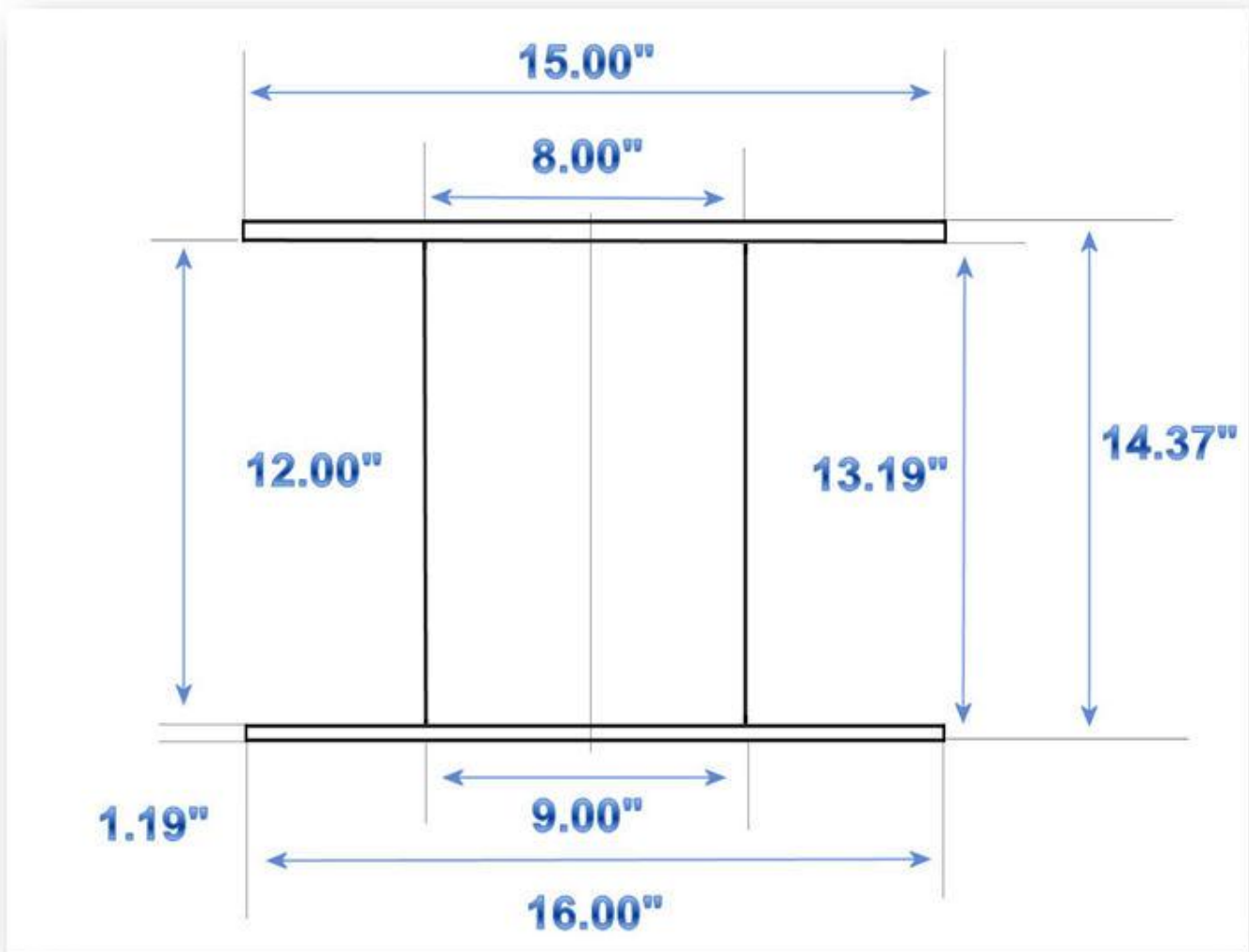
1,000 Lbs. CU / 300 Lbs.





25RP Reel

Reel Identification:
REEL-PAK 250
Nominal Wire Weight:
250 Lbs. CU / 75 Lbs.





16" Wooden Reel

Flange Diameter: 15.5"

Drum Diameter: 6"

Shaft Diameter: 2"

Inside Flange Traverse: 7 $\frac{5}{8}$ "

Outside Flange: 8 $\frac{5}{8}$ "

Approximate Weight: 5 Lbs.



18" Wooden Reel

Flange Diameter: 17.5"

Drum Diameter: 12"

Shaft Diameter: 1.5"

Inside Flange Traverse: 12"

Outside Flange: 12.75"

Approximate Weight: 7.25 Lbs.

Individual Packing Information

Package	Approx. Net Weight	Lbs. Tare Weight	Inside Traverse Width	Overall Dimensions		Arbor Hole	Barrel Diameter
	Film Covered			Height	Diameter	Diam Hole	
T1000	950	16.9	30"	32 ⁵ / ₁₆ "	16 ¹ / ₂ " TOP 19 ¹ / ₂ " BOT	1 ¹⁷ / ₃₂ "	8" TOP 9 ¹ / ₄ " BOT
T500	550	13.2	24"	26 ³ / ₈ "	15" TOP 16" BOT	1 ¹⁷ / ₃₂ "	8" TOP 9" BOT
T250	250	8.6	12"	14 ³ / ₈ "	15" TOP 16" BOT	1 ¹⁷ / ₃₂ "	8" TOP 9" BOT
24X6		18	6"	8 ³ / ₄ "	24" TOP 24" BOT	1 ¹⁷ / ₃₂ "	14" TOP 14" BOT
24X11	400	35	11"	13 "	24" TOP 24" BOT	1 ¹⁷ / ₃₂ "	14" TOP 14" BOT
T100	80	2.6	12"	13 ¹ / ₄ "	10" TOP 11" BOT	1 ¹⁷ / ₃₂ "	6" TOP 6" BOT
T100 Pail	80	3.5	13 ¹ / ₄ "	14"	12" TOP 13 ³ / ₈ " BOT	--	--
12X7	80	5.4	7"	8 ¹ / ₄ "	11 ³ / ₄ " TOP 6 ⁹ / ₁₆ " BOT	1 ¹⁷ / ₃₂ "	7" TOP 7" BOT
T50	40	1.6	9"	10"	8 ¹ / ₂ " TOP 9 ¹ / ₄ " BOT	1 ¹⁷ / ₃₂ "	5 ³ / ₄ " TOP 6 ¹ / ₂ " BOT
6X6	16	.67	6"	6 ¹ / ₂ "	6" TOP 6" BOT	⁵ / ₈ "	3 ³ / ₄ " TOP 3 ³ / ₄ " BOT
6X3 ¹/₂	9	.50	3 ¹ / ₂ "	4"	6" TOP 6" BOT	⁵ / ₈ "	3 ¹ / ₂ " TOP 3 ¹ / ₂ " BOT